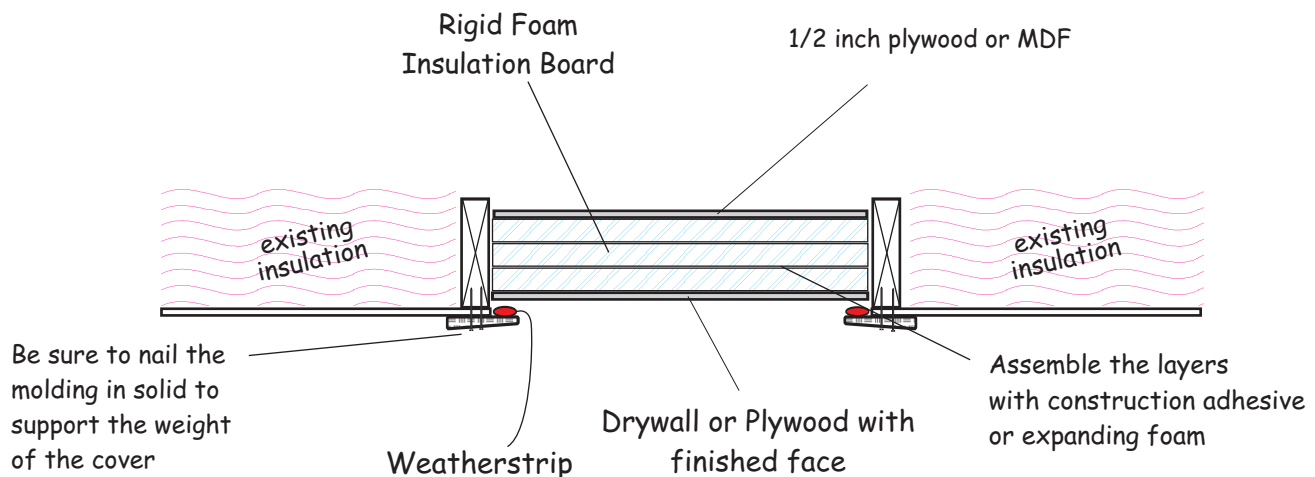


ATTIC SCUTTLE HATCH



There are two goals when making a hatch cover. The first is to insulate the cover to match the R-value of the ceiling and the second is to make the whole unit seal airtight. Typically, we recommend sandwiching a few layers of foam board between two layers of a solid material like plywood or MDF. This makes the cover heavy enough to sit tight into the weatherstrip. The solid boards on the outside also make it durable when it is removed and replaced.

Rigid foam board usually has an R-value of 5 per inch. Fiberglass batts have an R-value of around 3 per inch. Use as many layers of foam as practical when making the cover. Too many layers may make it hard to maneuver on and off. Two layers of two inch thick foam works well.

To assemble the cover, use either construction adhesive or use a can of expanding foam and press the layers together. Put the unit on a flat surface, glue the layers together and apply weight on top to hold it compressed until the adhesive dries.

Install a bead of peel and stick weatherstripping material (foam or hollow rubber work well) to the back of the trim frame that the cover will rest onto.

The most important thing to make sure of, is that the cover sits tightly and evenly on the weatherstripping. Adjust the frame until it does.